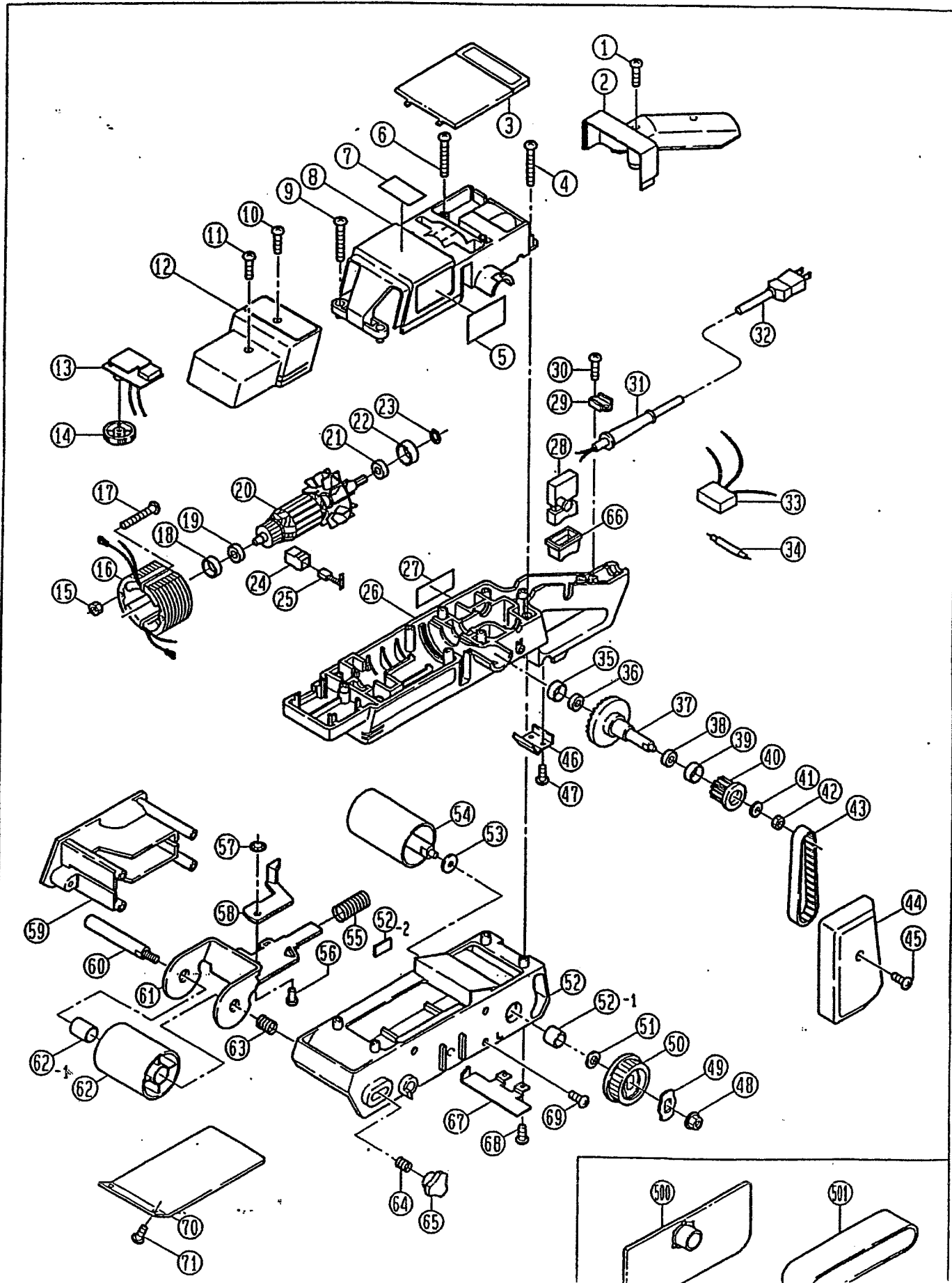


BELT SANDER

BE-321 Type II

LANDSCAPEPOWER.COM



PARTS LIST FOR AFTER SALES SERVICE

MODEL BE321 TYPE II

REF	PART NO.	DESCRIPTION	QTY	REF	PART NO.	DESCRIPTION	QTY
1	9060416	TAPPING SCREW (B) M4X16	2	52-2	6960044	BELT GUIDE	2
2	6830641	HANDLE COVER	1	53	6900252	THRUST WASHER	1
3	6880463	TOP COVER	1	54	6080088	DRIVE ROLLER	1
4	9040510	TAPPING SCREW (S) M5X40	2	55	6180124	COMPRESSION SPRING	1
5	6916309	NAME PLATE	1	56	6120280	RIVET #5	1
6	9060535	TAPPING SCREW (B) M5X35	4	57	6130188	PUSH NUT	1
7	6920312	SELECTION LABEL	1	58	6830646	LEVER	1
8	6800779	HOUSING (B)	1	59	6800785	ROLLER CASE	1
9	9040540	TAPPING SCREW (S) M5X40	2	60	6100092	FRONT ROLLER SHAFT	1
10	9060414	TAPPING SCREW (B) M4X14	1	61	6150782	FRONT ROLLER ARM	1
11	9060530	TAPPING SCREW (B) M5X30	1	62	6080087	FRONT ROLLER	1
12	6830643	FRONT HANDLE COVER	1	62-1	6760043	OILLESS METAL	2
13	6430004	SPEED CONTROL CIRCUIT MODULE	1	63	6180125	COMPRESSION SPRING	1
14	6830649	DIAL	1	64	6180568	ADJUSTMENT SPRING	1
16	6500783	FIELD COIL	1	65	6130681	KNOB NUT M6	1
18	6370107	CUSHION RUBBER	1	66	6370031	SWITCH COVER	1
19	622274001	BALL BEARING #608LLB	1	67	6882320	SAFETY COVER	1
20	6030881	ARMATURE	1	68	9000408	PAN SCREW (M4X8)	1
21	969235005	BALL BEARING #6200LLB	1	69	9060416	TAPPING SCREW (B) M4X16	4
22	6370108	CUSHION RUBBER	1	70	6150773	SHOE PLATE	1
23	9511000	RETAINING RING S-10	1	71	9040408	TAPPING SCREW (S) M4X8	2
24	6570096	BRUSH HOLDER	2	---	6560002	CONNECTOR	1
25	6541143	CARBON BRUSH SET	1				
26	6803260	HOUSING (A)	1				
27	6922424	"RYOBI" MARK	1	STANDARD ACCESSORIES			
28	6550138	TRIGGER SWITCH	1	500	6071363	DUST BAG	1
29	6560067	CORD CLAMP	1	501	6611173	ABRASIVE BELT	
30	9060416	TAPPING SCREW (B) M4X16	2	SERVICE NOTES: <div style="background-color: #e0e0e0; padding: 5px; text-align: center; font-size: 1.2em; font-weight: bold;">LANDSCAPEPOWER.COM</div>			
31	6560131	CORD HOLDER	1				
32	6520704	POWER CORD	1				
35	6370107	CUSHION RUBBER	1				
36	622274001	BALL BEARING #608LLB	1				
37	6050018	BEVEL GEAR	1				
38	622274001	BALL BEARING #608LLB	1				
39	6370107	CUSHION RUBBER	1				
40	6860066	PULLEY (S)	1				
41	9580600	CONICAL SPRING M6	1				
42	9300600	HEX NUT M6	1				
43	6860069	TIMING BELT	1				
44	6880459	BELT COVER	1				
45	9060520	TAPPING SCREW (B) M5X20	1				
46	6180130	PLATE SPRING	1				
47	9060410	TAPPING SCREW (B) M4X10	2				
48	6130963	HEX NUT M6	1				
49	6150794	LOCK PLATE	1				
50	6860067	PULLEY (L)	1				
51	6900252	THRUST WASHER	1				
52	6081842	FRAME	1				
52-1	6760043	OILLESS METAL	2				