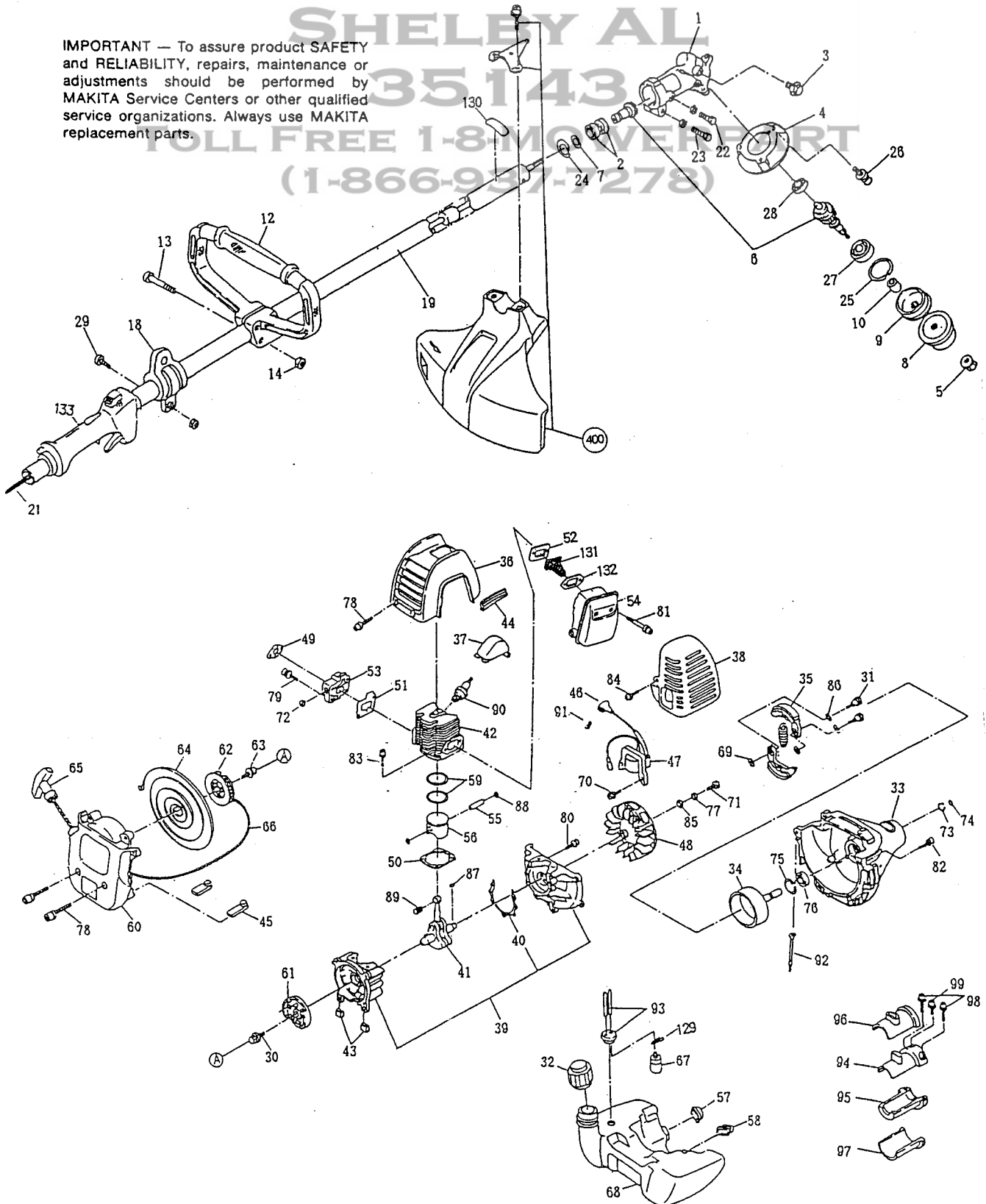




IMPORTANT — To assure product **SAFETY** and **RELIABILITY**, repairs, maintenance or adjustments should be performed by **MAKITA** Service Centers or other qualified service organizations. Always use **MAKITA** replacement parts.



7031 HIGHWAY 47

SHELBY AL

35143

TOLL FREE 1-8-MOWERPART

(1-866-937-7278)

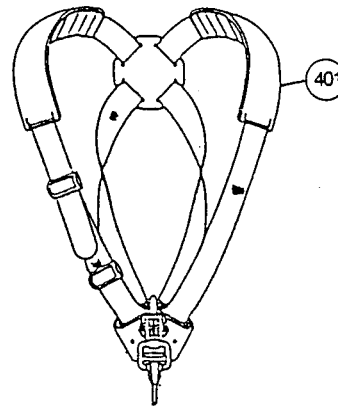
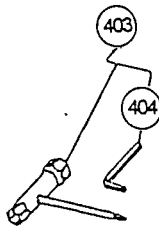
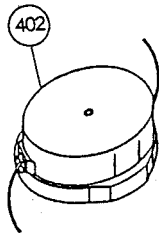
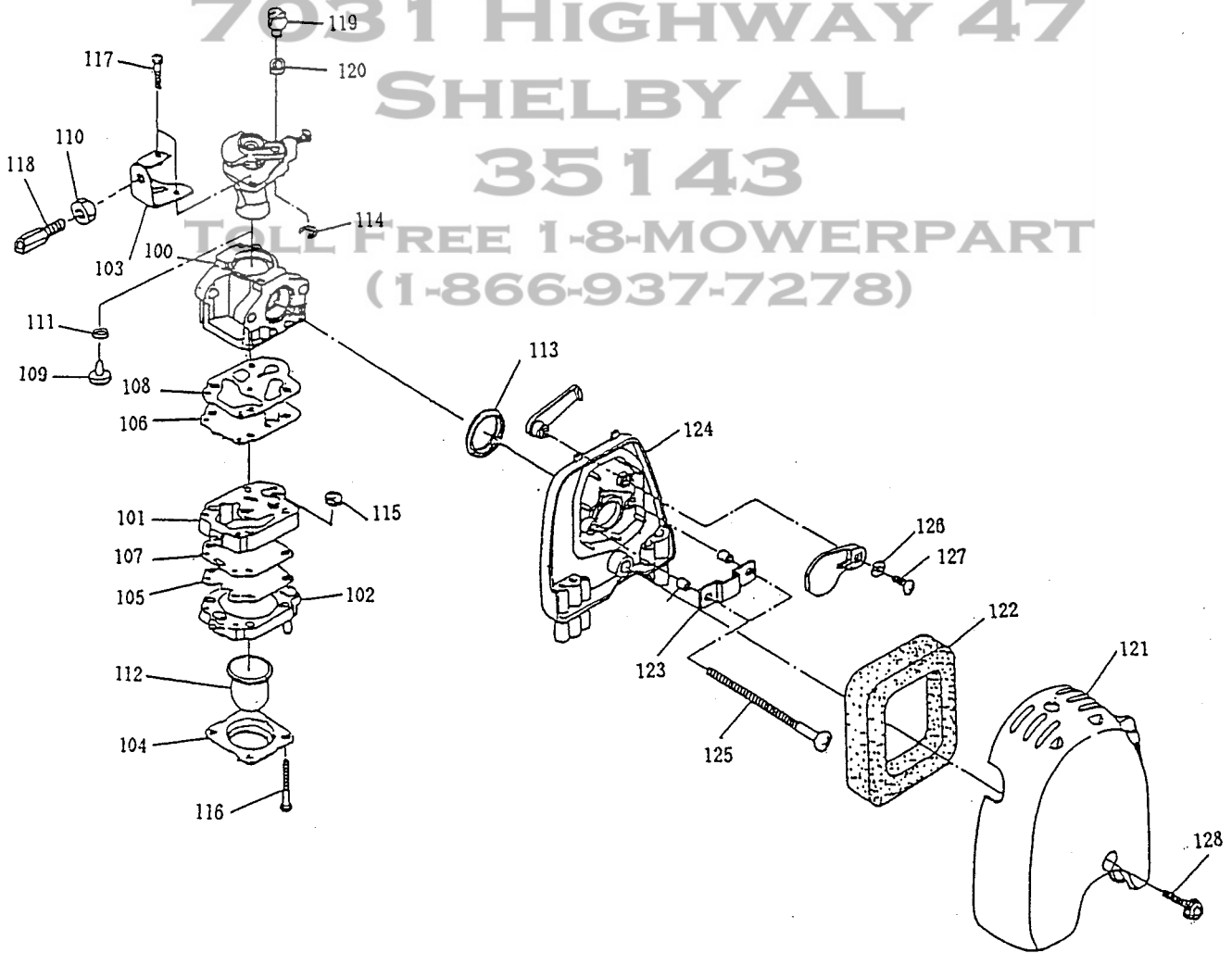


Fig.	Part No.	Qty. Used	Description	Fig.	Part No.	Qty. Used	Description
1	627-30010-06	1	GEAR CASE UNIT (Incl. Fig. 2 ~ 10, 23 ~ 28)	63	531-50070-20	1	SET SCREW
2	621-25003-00	2	BALL BEARING #609ZZ	64	541-50030-20	1	SPIRAL SPRING
3	641-35006-00	1	OIL BOLT	65	521-50021-10	1	STARTER KNOB
4	641-85002-00	10	GUARD	66	523-50240-22	1	STARTER ROPE
5	625-85050-01	1	NUT	67	523-65039-00	1	FILTER
6	627-30030-01	1	CUTTER SHAFT Set	68	531-65020-01	1	FUEL TANK
7	625-35026-00	1	OUTER SNAP RING	69	627-25000-00	2	WASHER
8	625-85000-01	1	CLAMP WASHER	70	001-17052-00	2	BOLT 5x20 Ass'y
9	625-85036-00	1	RECEIVE WASHER	71	001-66061-60	1	BOLT M6x16
10	625-35013-00	1	SPACER	72	002-17050-00	2	NUT M5
12	621-45000-01	1	HANDLE (Loop Type)	73	003-15120-00	1	OUTER SNAP RING
13	011-90598-60	4	S. H. BOLT M5x33	74	006-26100-60	1	O RING
14	002-27050-00	4	NUT M5	75	003-14320-00	1	INNER SNAP RING
18	625-40230-00	1	HANGER Ass'y (Incl. Fig. 29)	76	060-01299-50	1	BALL BEARING #6201DD/ #6201 2RU
19	627-10010-01	1	SHAFT PIPE cpl.	77	003-20060-00	1	SPRING WASHER
21	627-15008-00	1	SHAFT	78	011-90595-70	4	S. H. BOLT M5x30
22	001-13061-20	1	BOLT Ass'y M6x12	79	011-90596-30	2	S. H. BOLT M5x20
23	001-13063-00	1	BOLT Ass'y M6x30	80	014-00597-90	5	SCREW M5x25
24	003-14240-00	1	INNER SNAP RING	81	011-90596-70	2	S. H. BOLT M5x55
25	003-14300-00	1	INNER SNAP RING	82	011-90597-30	3	S. H. BOLT M5x20
26	011-90597-80	3	S. H. BOLT M5x12	83	011-90599-50	4	S. H. BOLT M5x18
27	060-01099-70	1	BALL BEARING #6200DDU	84	014-00594-80	1	SCREW Ass'y M5x14
28	060-00799-90	1	BALL BEARING 627ZZ	85	020-00699-20	1	WASHER M6
29	004-36052-00	1	SCREW & WASHER Ass'y	86	020-00899-10	2	WASHER M8
30	620-20060-00	1	BOLT Ass'y	87	032-30399-90	1	WOODRUFF KEY
31	625-25004-00	2	CLUTCH BOLT	88	056-50899-80	2	CLIP
32	531-60140-00	1	FUEL TANK CAP	89	061-00899-90	1	N. ROLLER BEARING
33	627-10040-01	1	CLUTCH CASE Ass'y (Incl. Fig. 75 & 76)	90	065-01498-10	1	SPARK PLUG
34	627-20020-02	1	CLUTCH DRUM cpl.	91	065-40099-31	1	PLUG CAP SPRING
35	627-20030-00	1	CLUTCH	92	616-55002-01	1	WIRE
36	531-55050-00	1	CYLINDER COVER	93	085-11799-72	1	TUBE
37	531-75007-00	1	PLUG COVER	94	627-15003-01	1	PIPE BRACKET 1
38	531-35033-00	1	MUFFLER COVER	95	627-15004-01	1	PIPE BRACKET 2
39	531-10070-00	1	CRANKCASE cpl. (Incl. Fig. 40 & 80)	96	627-15001-05	1	PIPE DAMPER (1)
40	531-15012-00	1	CRANKCASE GASKET	97	627-15002-05	1	PIPE DAMPER (2)
41	531-20070-01	1	CRANKSHAFT cpl.	98	011-90599-50	2	S. H. BOLT M5x18
42	524-15009-01	1	CYLINDER	99	011-90599-00	1	S. H. BOLT M5x12
43	521-65002-00	2	DAMPER	100	531-60210-00	1	CARBURETOR
44	531-55041-00	1	DAMPER	101	523-60461-30	1	PUMP BODY Ass'y
45	531-65031-00	2	DAMPER	102	*	1	AIR PURGE BODY Ass'y
46	531-70100-30	1	PLUG CAP	103	523-60520-20	1	BRACKET CABLE
47	531-70100-20	1	COIL	104	*	1	PRIMER PUMP COVER
48	531-70100-10	1	FLYWHEEL	105	531-60052-50	1	METERING DIAPHRAGM Ass'y
49	510-35028-00	1	SPACER GASKET	106	524-60010-40	1	PUMP DIAPHRAGM
50	531-15003-01	1	CYLINDER GASKET	107	523-60460-40	1	METERING DIAPHRAGM GASKET
51	531-35023-00	1	INSULATOR GASKET	108	524-60010-30	1	PUMP GASKET
52	531-35022-00	1	MUFFLER GASKET	109	503-60020-10	1	JET
53	531-35005-00	1	INSULATOR	110	531-60054-50	1	CABLE ADJUST NUT
54	531-30090-01	1	EXHAUST MUFFLER	111	524-60010-10	1	O RING
55	524-25001-00	1	PISTON PIN	112	524-60011-50	1	PRIMER PUMP
56	524-25008-00	1	PISTON	113	523-60180-20	1	RING PACKING
57	503-65002-00	1	PLATE	114	531-60051-20	1	RING
58	503-65003-00	1	PLATE	115	501-60040-10	1	INLET SCREEN
59	524-25007-01	2	PISTON RING	116	523-60460-10	4	PUMP COVER SCREW
60	531-50120-00	1	REWIND STARTER (Incl. Fig. 61)	117	524-60012-40	2	THROTTLE COLLAR SCREW
61	524-50070-00	1	PULLEY STARTER	118	531-60200-20	1	CABLE ADJUST SCREW
62	531-50070-10	1	REEL	119	523-60180-40	1	SWIVEL

Fig.	Part No.	Qty. Used	Description	Fig.	Part No.	Qty. Used	Description
120	523-60520-30	1	WASHER	130	625-95147-00	1	CAUTION LABEL
121	531-35032-00	1	AIR CASE CLEANER	131	524-35014-00	1	SPARK ARRESTER
122	523-35047-00	1	AIR CLEANER ELEMENT	132	531-35006-00	1	MUFFLER GASKET
123	501-35024-00	1	AIR CLEANER PLATE Ass'y	133	627-50010-01	1	CONTROL LEVER Ass'y
124	531-30150-00	1	AIR CLEANER PLATE Ass'y (Incl. Fig. 126 & 127)	ACCESSORIES			
125	014-00597-30	2	SCREW M5x50	400	621-80080-03	1	PROTECTOR Ass'y
126	003-11040-00	1	WASHER	401	641-70150-02	1	BAND Ass'y
127	015-00499-80	1	TAPPING SCREW M4x8	402	B-60143	1	BUMP & FEED
128	014-00594-80	1	SCREW Ass'y M5x14	403	611-90190-00	1	TOOL KIT (Incl. Fig. 404)
129	056-10599-90	1	HOSE CLAMP	404	783202-0	1	HEX. WRENCH 4

4 Model MS2810

* Part number not available individually

04-01